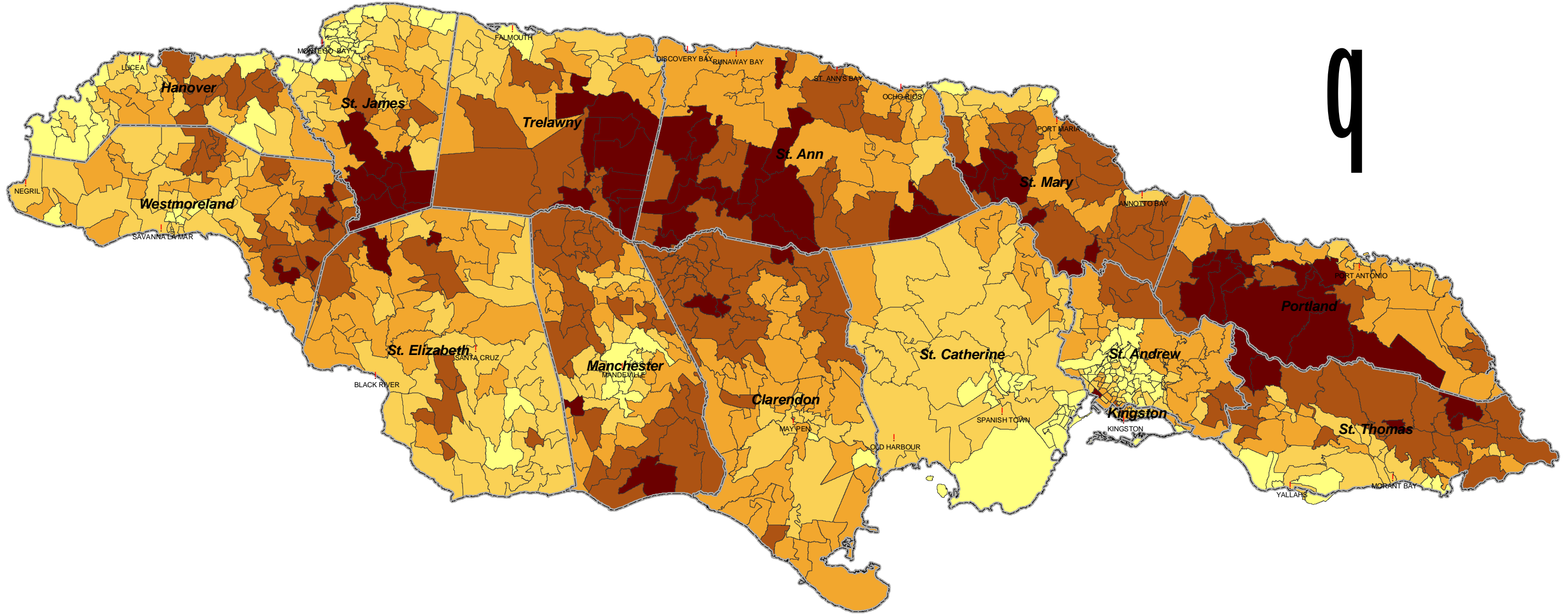
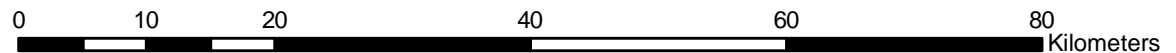


JAMAICA - POVERTY, 2002
(Consumption-Based Approach)



9



Legend

Persons below the Poverty Line (%)

- 45.21 - 68.30
- 32.91 - 45.20
- 21.80 - 32.90
- 11.50 - 21.79
- 0.00 - 11.49
- parish



Prepared by: The Planning Institute of Jamaica
University of Technology, Jamaica (UTECH)

Date: July 2008

Source: Population Census 2001
Survey of Living Conditions 2002